



**Industrial  
Climate  
Engineering™**  
An ACS Brand



**AW-ESS750H**



## Features and Benefits

- **Energy Efficiency:** A variable speed compressor offers utmost efficiency, matching load directly with compressor capacity
- **Load Matching:** With a variable speed compressor, capacity equals cooling load, greatly reduces compressor cycling
- **Precise Temperature Control**
- **User Friendly Interface:** Built-in LCD display enables convenient operation
- **Environment Friendly:** R-410A refrigerant
- **Low Noise**
- **Minimal Dust Intrusion:** IP55 cabinet design

## AW-ESS750H

*25,500 BTUh (7.47 kW) Air Cooled Chiller for Liquid Cooled Batteries*

### General Description

Industrial Climate Engineering's 220V 1-Phase 50/60 Hertz air cooled door mounted chiller is primarily used to cool liquid cooled batteries in modular battery energy storage systems. With their built in heater it can also heat the batteries in cold climates when required. The chiller comes complete with a 40 liter tank and constant speed pump.

High and low refrigerant pressure, pump discharge pressure and coolant fluid level gauges allow easy maintenance. The M12 eyebolt allows for easy installation or removal (if required) at a job site.

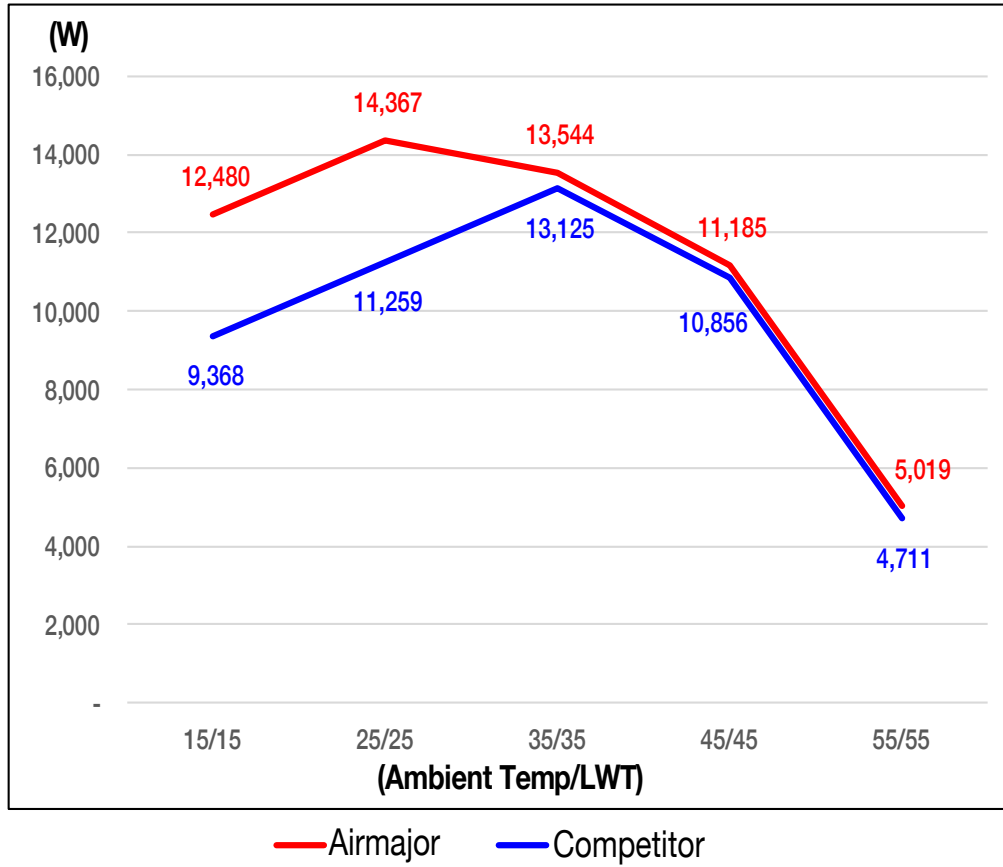
All models are both ETL and CE certified.

### Performance & Electrical Data

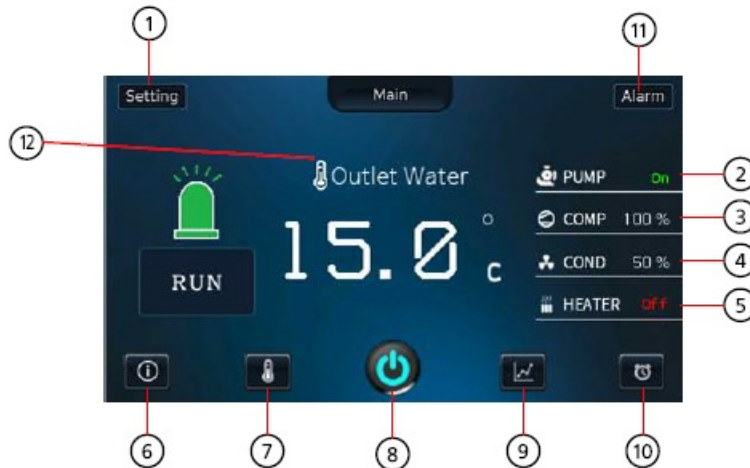
Model	AW-ESS750H
Height: Inches	55.1
Width: Inches	48.4
Depth: Inches	11.8
Weight: Pounds	463 (210kg)
Cooling Capacity: BTUh	25,500 <sup>1</sup> (7,473W)
Heating Capacity: BTUh	6,800 (1,992W)
Operating Range: °F (°C)	-4°F ~ 122°F (-20°C ~ 50°C) @ 40% RH
Flow Rate: LPM	80 (Under 1 Bar)
Power Consumption: Watts	3,350
Power Supply	220V 50/60Hz 1-Phase
Refrigerant	R-410A
Compressor	Variable Speed BLDC Inverter
Pump	1-Phase Constant Speed
Condenser Fan	Ø280/310 Backward Impeller, EC Motor
Tank Capacity: Liter	40
Expansion Valve	EEV
IP Class	IP 55

<sup>1</sup>The nominal cooling capacity of 25,500 BTUh (7,473W) is at ambient temp. 35°C and outlet water temp. 15°C. On this condition, inlet water temperature is 15°C then will be cooled out with 13.4°C at 80LPM / 1.5bar(23.2 psi).

## Cooling Curve At 15 ~ 55°C Ambient Temperature

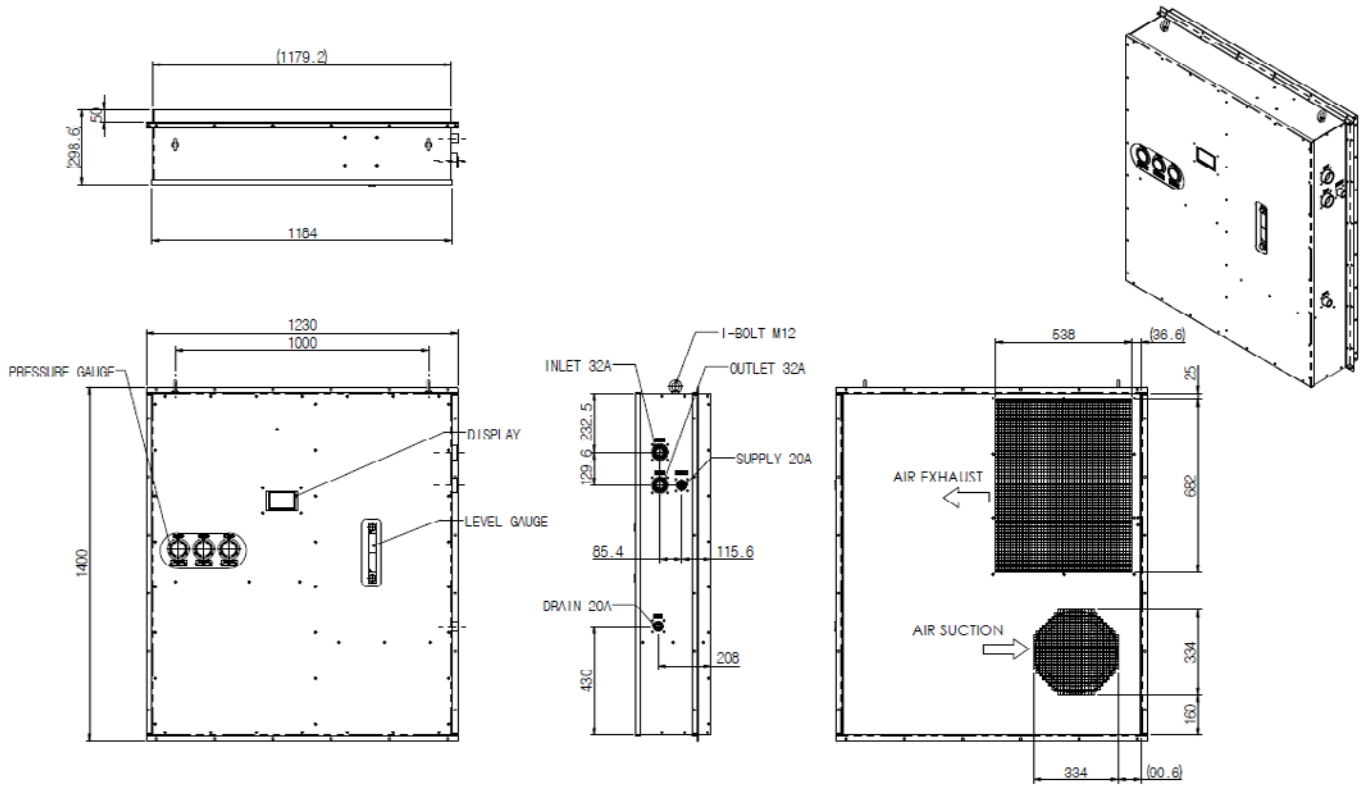


## Touch Screen LCD Interface



Item	Description	Item	Description
1	Main Menu	8	Run/Stop Button
2	Display Pump On/Off	9	Temperature Graph
3	Compressor Output	10	Date/Time
4	Condensation Fan Output	11	Alarm Message
5	Heater Operation/Stop	12	Control Temperature (Discharge Temperature)
6	Information		
7	Set Desired Temperature		

## Dimensional Drawings (mm)



## Notes

Please consult the Industrial Climate Engineering website at [www.acice.com](http://www.acice.com) for the latest product literature. Detailed dimensional data is available upon request. A complete warranty statement can be found in each product's Installation/Operation Manual, on our website. As part of the ICE continuous improvement program, specifications are subject to change without notice.



P.O. Box 5104 • Cordele, GA 31010-5104  
 2002 Hoover St • Cordele, GA 31015  
 (229) 273-9558  
 Email: [ice@airxcs.com](mailto:ice@airxcs.com) • Internet: [www.acice.com](http://www.acice.com)